

# Saspac Version 7.0

## User Note 7.5



### Converting data from Excel into SASPAC

#### Introduction

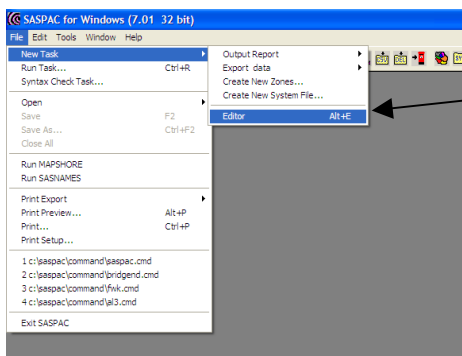
This user note describes the method to import a CSV or Excel file into SASPAC by creating a new system file. Thus, enabling any datasets you may hold locally to be permanently stored, selected and manipulated like any other census variable through SASPAC.

#### Method

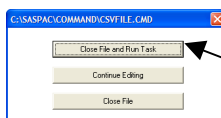
A	B	C	D	E	F	G	H
1	Zoneid	Local Authority	All People	Owms outright	Owms with shared own	Rented from Cou	Other social
2	60	Scotland	4876005	996065	2280332	25705	1050243
3	60QA	Aberdeen City	206516	39539	91744	1946	47352
4	60QB	Aberdeenshire	223978	55867	111957	856	30764
5	60QC	Angus	106445	24895	48901	312	17566
6	60QD	Argyll & Bute	87403	24239	34038	378	13691
7	60QE	Clackmannanshire	47124	8128	40914	284	16248
8	60QH	Dumfries & Galloway	145782	40152	55546	750	26219
9	60QJ	Dundee City	142501	24558	57586	901	32973
10	60QK	East Ayrshire	118600	20078	54552	187	35951
11	60QL	East Dumbartonshire	106965	28125	61744	172	12965
12	60QM	East Lothian	89556	17839	40972	466	21065
13	60QN	East Renfrewshire	88647	23042	53721	221	7838
14	60QP	Edinburgh, City Of	437793	101056	201037	2643	49001
15	60RJ	Eilean Siar	26165	9773	9717	48	4321
16	60QQ	Falkirk	143457	24710	67759	393	43551
17	60QR	Fife	342987	70159	161213	1262	79315
18	60QS	Glasgow City	565974	77369	213005	5514	150121
19	60QT	Highland	205351	54754	84826	1535	36329
20	60QU	Inverclyde	83055	14124	39858	332	19488
21	60QV	Midlothian	90040	13768	39780	251	18384
22	60QX	Moray	84871	20234	34757	247	15260
23	60QY	North Ayrshire	134427	25709	60810	424	34896
24	60QZ	North Lanarkshire	318123	41304	157242	1472	98855
25	60RA	Orkney Islands	19034	7456	6841	201	1771
26	60RB	Perth & Kinross	130857	33324	56496	685	18919
27	60RC	Renfrewshire	170707	28492	91709	551	33823
28	60QE	Scottish Borders	105382	25267	42357	542	13893
29	60RD	Shetland Islands	21678	6450	3092	136	4606
30	60RE	South Ayrshire	110438	27762	53421	453	20595
31	60RF	South Lanarkshire	298812	54371	158582	953	68236
32	60RG	Stirling	83730	19677	37024	470	17078
33	60QG	West Dumbartonshire	92625	13123	40708	649	26257
34	60RH	West Lothian	157582	20731	64423	473	36912

The first step is to prepare the Excel file for importing into SASPAC. This requires the addition of a 'zoneid' column that represents the unique identifying code of the variables geographic area, i.e. Output Area, ward or district. This must be the first column in the table and can be followed by the area name or 'zlabel' if required. The first row of the spreadsheet may also contain a variable header.

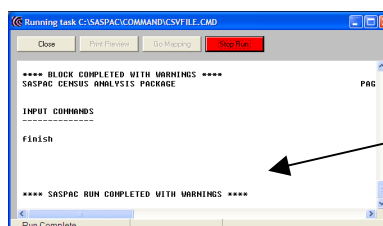
Once you are happy with the data to be processed you can save this file as a CSV (Comma delimited) or '.csv'.



Open SASPAC and select **File/New task/Editor** to open a new command file window.



Once open the script overleaf will need to be typed directly into the window with the user specifying the details that describe their particular dataset.



Following this the command file can be saved with an appropriate name by selecting 'File/Save as.'. On saving this command file a window appears prompting the user to 'Close a file and Run Task', 'Continue Editing' or 'Close file', if you happy with your command file select 'Close File and Run Task'. This will run the task and should finish with a message including 'SASPAC RUN COMPLETED', if this is the case then you can close this window. If there is an error encountered scrolling up in this window will provide further information as to the nature of this.

Type directly into the editor the text below:  
(NB. User specified input is required where text is highlighted in blue)

*"zlabel" is required only if the area name is included in the csv file.*

*Required only if the data has a variable header.*

*Input the location and title of the csv file.*

**Input csv file with headers name = "c:\SASPAC\Tenure for People at LA level.csv"**

**Read zoneid zlabel SP0010001 to SP0010010**

**SET DSYEAR 2001**

**SET DSNAM SCOTTENURE**

**SET DSLAB 2001 TENURE FOR PERSONS**

**SET ZONEYEAR 2001**

**Describe variable SP0010001 label = "All People"**

**Describe variable SP0010002 label = "Owns Outright"**

**Describe variable SP0010003 label = "Owns with a mortgage"**

**Describe variable SP0010004 label = "Shared ownership"**

**Describe variable SP0010005 label = "Rent from Council"**

**Describe variable SP0010006 label = "Other social landlord"**

**Describe variable SP0010007 label = "Priv. l'lord or letting agency"**

**Describe variable SP0010008 label = "Employer of a household member"**

**Describe variable SP0010009 label = "Rel. or fr. of hhold member"**

**Describe variable SP0010010 label = "Other"**

**Output system file name = "c:\SASPAC\SYFILES\Tenure for People at LA level.SYS" label = "Special Tenure Table 1"**

**End**

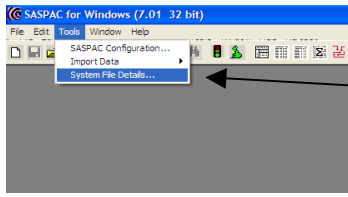
**Finish**

*These are keywords that **must** be included and contain basic details relating to your dataset.*

*Any variable code no longer than 12 characters can be used (we recommend a similar naming convention to that already used in the census tables).*

*The 'describe variable' commands are not mandatory but can be useful to include.*

*Specify the location, name and label of the new system file.*



Completing this task has created a new SASPAC system file (.SYS) containing only the data contained in the original CSV file. The details of this system can be viewed through **'Tools/System File Details...'** and selecting the new system file and the report level required. This returns details of zone area name, identity code and number of variables contained in the system file.

This new system file can now be combined and queried like any other census system file, with the exception of using the 'search tables' functionality. If you would like to create a new table layout that incorporates this data and other census variables please refer to Module 8 of the Training Manual available from [www.saspac.org/Training.html](http://www.saspac.org/Training.html) or the SASPAC Helpdesk.