

SASPAC Version 7.0

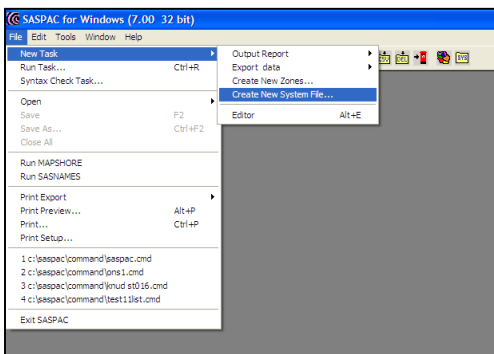
User Note 7.3



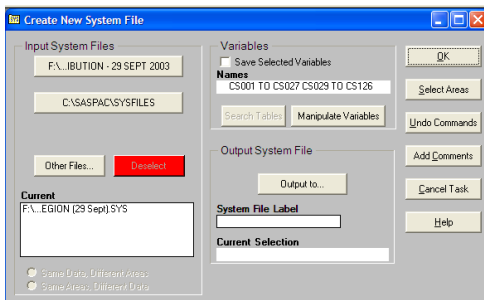
Table CS028 for Output Areas in the West Midlands Region as distributed with Version 7 is incorrect due to the CSV file received from ONS being in a different order to those for other regions. This means that the file 'CENSUS AREA STATISTICS FOR OAS IN WEST MIDLANDS REGION (29 Sept).SYS' has to be corrected. This User Note describes the method of achieving that end.

This method uses the SAVE command initially to create a file that contains all the tables except CS028. It then adds the correct table CS028 that has been recreated to take account of the different order of the data to this new file to create a corrected file of Census Area Statistics for Output Areas in the West Midlands Region.

Step 1 – Create a file that excludes Table CS028.



This step consists of a 'Create New System File' task, and so the 'File/New Task/Create New System File...' Menu item is used as displayed here. This can also be achieved by using the last button on the button bar.

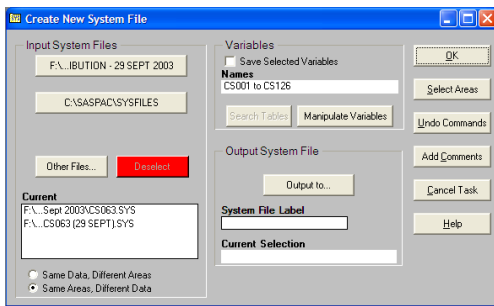


When this option is activated, the appropriate system file - Census Area Statistics for OAs In West Midlands Region (29 Sept).SYS – is selected in the normal manner and the text 'CS001 TO CS027 CS029 TO CS126' is entered into the 'Variables' text box as indicated here. The 'Save variables' checkbox is also clicked.

Note that it is not necessary for all tables in a range to be present – only the first and last tables specified in a range must exist. For example, table CS087 does not exist, but since both CS029 and CS126 exist, SASPAC has no problem with the expansion.

Finally an appropriate label is entered into the 'System File Label' text box, and a suitable name such as 'Census Area Statistics for OAs In West Midlands Region – less CS028 (29 Sept).SYS' is allocated through the usual Windows dialog box. The command file may now be run.

Step 2 – Merge in the correct Table CS028.



This step takes the file created in the first step and reads it in parallel with the newly created CS028 (available from the SASPAC Help Desk) to create a file containing all the correct tables. This is again a **'Create New System File'** Task, and both files are opened in the usual way with the **'Same Areas, Different Data'** radio button being checked. The text **'CS001 to CS126'** is entered into the **'Variables'** text box as shown here. As previously, the 'Save variables' checkbox is clicked.

Again, an appropriate label is entered into the **'System File Label'** text box, and a suitable name such as 'Census Area Statistics for OAs In West Midlands Region (1 Dec).SYS' is allocated through the usual Windows dialog box. The command file is then run to recreate the file containing all Census Area Statistics for all Output Areas in the West Midlands Region.

When the new file is created, it is recommended that the original file is removed from the System File directory to ensure that there is no confusion at a later date as to which file should be used.

The two command files created during this procedure are:

```
input system file name = "F:\2001 data for distribution - 29 /  
Sept 2003\CENSUS AREA STATISTICS FOR OAS IN WEST MIDLANDS /  
REGION (29 Sept).SYS"  
save CS001 TO CS027 CS029 TO CS126  
output system file name = "F:\2001 data for distribution - 29 /  
Sept 2003\CENSUS AREA STATISTICS FOR OAS IN WEST MIDLANDS /  
REGION - less CS028 (29 Sept).SYS" /  
label=Extract File for CS028 correction  
end  
finish
```

and

```
input system file name = "F:\2001 data for distribution - 29 /  
Sept 2003\CS028.SYS"  
input system file name = "F:\2001 data for distribution - 29 /  
Sept 2003\CENSUS AREA STATISTICS FOR OAS IN WEST MIDLANDS /  
REGION - LESS CS028 (29 SEPT).SYS"  
read in parallel  
save CS001 to CS126  
output system file name = "F:\2001 data for distribution - 29 /  
Sept 2003\CENSUS AREA STATISTICS FOR OAS IN WEST MIDLANDS /  
REGION (1 Dec).SYS" label=CAS for OAs in West Mids Region  
end  
finish
```