

# Saspac Version 7.0

## User Note 7.2

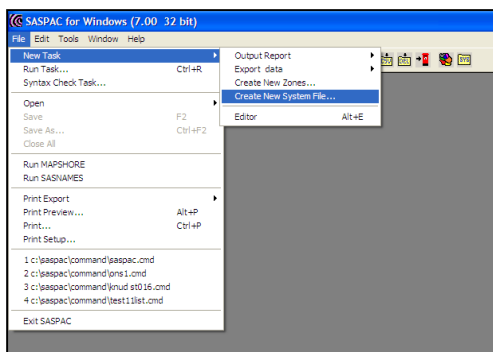
Census  
Census  
Sensus  
Sensus  
Sassas  
Sassas  
Saspas  
Saspac

Table CS063 for Output Areas in the East Midlands Region as distributed with Version 7 contains an error whereby the rows relating to 'ALL FULL-TIME STUDENTS 16 – 18 years' and 'Economically inactive 16 – 18 years' have been transposed. This means that the file 'CENSUS AREA STATISTICS FOR OAS IN EAST MIDLANDS REGION (29 Sept).SYS' has to be corrected. This User Note describes two ways of achieving that end.

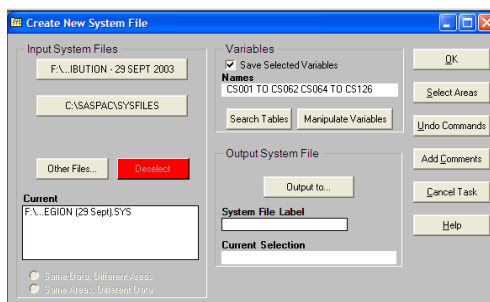
### Method 1

This method uses the SAVE command initially to create a file that contains all the tables except CS063. It then adds the correct table CS063 that has been recreated to take account of the different order of the data to this new file to create a corrected file of Census Area Statistics for Output Areas in the East Midlands Region.

#### Step 1 – Create a file that excludes Table CS063.



This step consists of a 'Create New System File' task, and so the 'File/New Task/Create New System File....' Menu item is used as displayed here. This can also be achieved by using the last button on the button bar.



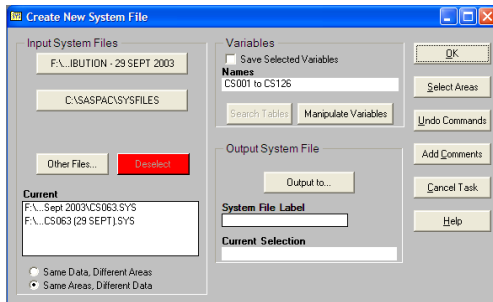
When this option is activated, the appropriate system file - Census Area Statistics for OAs In East Midlands Region (29 Sept).SYS – is selected in the normal manner and the text 'CS001 TO CS062 CS064 TO CS126' is entered into the 'Variables' text box as indicated here. The 'Save variables' checkbox is also clicked.

Note that it is not necessary for all tables in a range to be present – only the first and last tables specified in a range must exist. For example, table CS087 does not exist, but since both CS064 and CS126 exist, SASPAC has no problem with the expansion.

Finally an appropriate label is entered into the 'System File Label' text box, and a suitable name such as 'Census Area Statistics for OAs In East Midlands Region – less CS063 (29 Sept).SYS' is allocated through the usual Windows dialog box. The command file may now be run.

#### Step 2 – Merge in the correct Table CS063.

This step takes the file created in the first step and reads it in parallel with the newly created CS063 (available from the SASPAC Help Desk) to create a file containing all the correct tables. This is again a 'Create New System File' Task, and both files are



opened in the usual way with the '**Same Areas, Different Data**' radio button being checked. The text '**CS001 to CS126**' is entered into the '**Variables**' text box as shown here. As previously, the 'Save variables' checkbox is clicked.

Again, an appropriate label is entered into the '**System File Label**' text box, and a suitable name such as 'Census Area Statistics for OAs In East Midlands Region (18 Nov).SYS' is allocated through the usual Windows dialog box. The command file is then run to recreate the file containing all Census Area Statistics for all Output Areas in the East Midlands Region.

When the new file is created, it is recommended that the original file is removed from the System File directory to ensure that there is no confusion at a later date as to which file should be used.

The two command files created during this procedure are:

```
input system file name = "F:\2001 data for distribution - 29 /
Sept 2003\CENSUS AREA STATISTICS FOR OAS IN EAST MIDLANDS /
REGION (29 Sept).SYS"
save CS001 TO CS062 CS064 TO CS126
output system file name = "F:\2001 data for distribution - 29 /
Sept 2003\CENSUS AREA STATISTICS FOR OAS IN EAST MIDLANDS /
REGION - less CS063 (29 Sept).SYS" /
label=Extract File for CS63 correction
end
finish
```

and

```
input system file name = "F:\2001 data for distribution - 29 /
Sept 2003\CS063.SYS"
input system file name = "F:\2001 data for distribution - 29 /
Sept 2003\CENSUS AREA STATISTICS FOR OAS IN EAST MIDLANDS /
REGION - LESS CS063 (29 SEPT).SYS"
read in parallel
save CS001 to CS126
output system file name = "F:\2001 data for distribution - 29 /
Sept 2003\CENSUS AREA STATISTICS FOR OAS IN EAST MIDLANDS /
REGION (18 Nov).SYS" label=CAS for OAs in East Mids Region
end
finish
```

## Method 2

As all the correct data is in the existing system file, albeit in the wrong locations, the correct system file can be created by recoding the variables to the appropriate locations. For example, the count in cell location CS0630061 should appear at location CS0630013 and vice versa. A Command File script can therefore be written to take account of the required recoding.

The command file is of the form shown on the next page. In order to adapt this to local needs, the only changes necessary are to the drive and directory locations of the existing and new System Files.

## Command File for recreating System File for Census Area Statistics for Output Areas in East Midlands Region with correct values in Table CS063

```
input system file name = "F:\2001 data for distribution - 29 /  
Sept 2003\CENSUS AREA STATISTICS FOR OAS IN EAST MIDLANDS /  
REGION (29 SEPT).SYS"  
Dummy13 = CS0630013  
Dummy14 = CS0630014  
Dummy15 = CS0630015  
Dummy16 = CS0630016  
Dummy17 = CS0630017  
Dummy18 = CS0630018  
CS0630013 = CS0630061  
CS0630014 = CS0630062  
CS0630015 = CS0630063  
CS0630016 = CS0630064  
CS0630017 = CS0630065  
CS0630018 = CS0630066  
CS0630061 = Dummy13  
CS0630062 = Dummy14  
CS0630063 = Dummy15  
CS0630064 = Dummy16  
CS0630065 = Dummy17  
CS0630066 = Dummy18  
SAVE CS001 TO CS126  
output system file name = "F:\2001 data for distribution - 29 /  
Sept 2003\CENSUS AREA STATISTICS FOR OAS IN EAST MIDLANDS /  
REGION (18A Nov).SYS" label=CAS for OAs in East Mids Region  
End  
Finish
```

By default, SASPAC will save all the input data items and any created during a task. As the dummy variables are not required within the final System File, the **'SAVE'** command is used to eliminate these and to keep only those on the original System File.

When this Command File is run, there will be a series of warnings that indicate variables are being overwritten. These may be disregarded, and as they are only warnings, processing will not be affected.

Again, when the new file is created, it is recommended that the original file is removed from the System File directory to ensure that there is no confusion at a later date as to which file should be used.

### Conclusion

There is no difference between the results obtained from these two methods. They are both presented here to show various ways in which SASPAC may be used to create new System Files from existing ones. Obviously, the second method can only be used when the correct data exists within the System File. If incorrect data has originally been created, then the new data must initially be loaded into a System File, and the first method would then be used to create the corrected System File.