

SASPAC Version 7.0

User Note 7.1



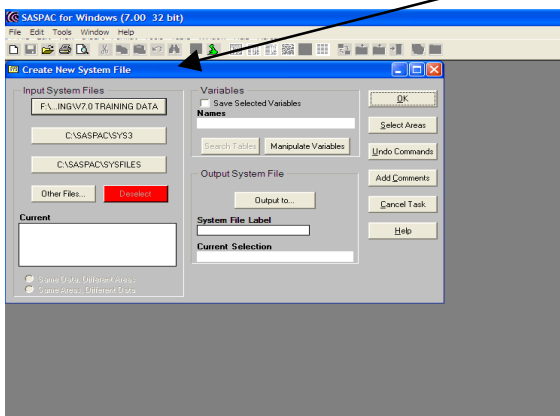
Creating New System files

Introduction

SASPAC users may find it useful to create system files from the national and regional system files to contain data relating only to their own area. This is a straightforward task and can be carried out through the main file menu of SASPAC. The following text and screens shots takes the user through this process.

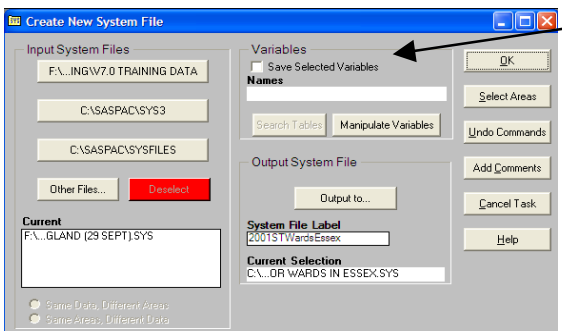
Method

Open SASPAC and select **File/NewTask/Create New System file...** . This will display the familiar windows task menu with “Create New System File” as a header.



Under “Input System files” select the appropriate national or region system file that contains the appropriate dataset and covers the required geographic level. Then through the “**Select Areas**” and “**view data**” options select the area or areas of interest, remembering to “Make command” before closing the window.

Now you are required to specify where you would like the new system file to be located under “Output system file” and “**Output to...**”. Here you specify the location as well as the title of the new system file, for example: “*2001 Standard Tables for wards in Essex*”. By default your new system file will be located in the first system file directory, usually **c:SASPAC\SYFILES**, it is possible to select a new location at this point if required. After saving the new file name you will be required to add a file label, which again will reflect the content of the new system file.



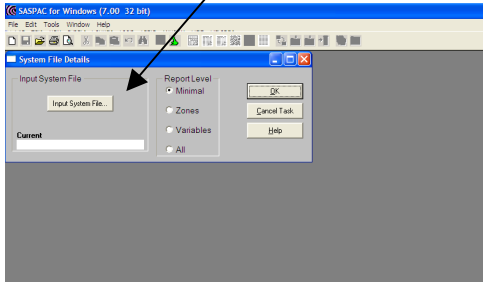
You will notice “Variables” is the remaining area of the task window we have not completed. To create a system file that includes all variables on the original input file leave this check box unchecked and do not place the cursor within the text box.

If required the “**Manipulate variables**” function can be used to create your own variables, these are then added to the existing variables already on the input system file (NB. To include the new variables you do not enter the new variable name in the text box under “Names”, simply make the command and close the new

variable task window). Alternatively, by inputting the variable identifiers in the “Names” text box and checking “Save Selected Variables”, you can chose to select particular variables within the dataset or only those you have created.

Now we have completed all the necessary fields of the task window we can run the task by selecting "OK" and a new system file will be created. If the task has run successfully you should receive the message "***** **SASPAC RUN COMPLETED SUCCESSFULLY** *****". Notice the "Print Preview" button is not available as there is no data to preview.

The details of this new system file may be viewed through the **Tools/System file details...** menu. Select the newly created system file as the input system file and you now have a choice 4 different levels of reports; "Minimal", "Zones", "Variable", "All".



"Minimal"- produces basic information relating to the system file e.g. date of creation, title, label, number of tables and variables,

"Zones"- produces a list of all the zone identity codes contained on the system file

"Variables"- produces a list all the tables and variables contained on the system file

"All" - produces all of the above details.

Once the report level has been selected you simple select "**OK**" to run the task and view the details.

Below is a copy the command file created through the above example:

```
input system file name = "C:\SASPAC\ /  
SYFILES\2001 STANDARD TABLES NATIONAL TO WARD.SYS" /  
include wardlevel 22?  
output system file name = "C:\SASPAC\ /  
SYFILES\ "2001 Standard Tables for wards in Essex.SYS " label= 2001StwardsEssex  
end  
finish
```