

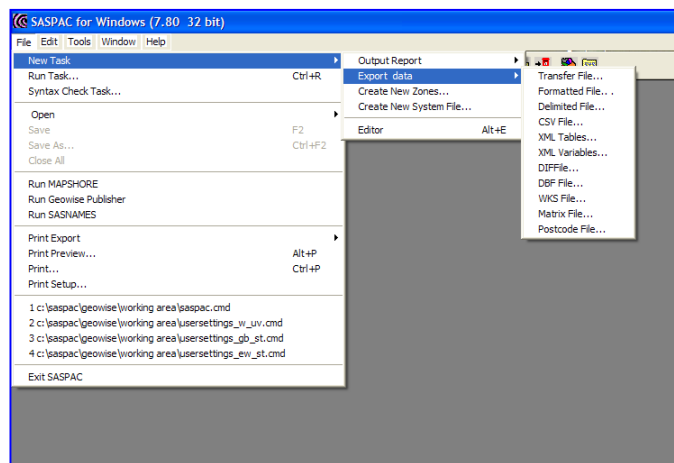
Module 1

—

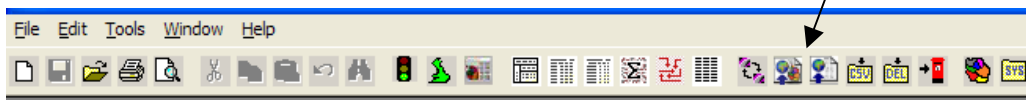
Publishing to the Area Profile Template

Example: Using the ‘Area Profile’ publishing template, create a HTM file that represents the country of birth characteristics of all People in all London Boroughs. Amend the header and footer information associated with the final page and display all the countries of birth as one single topic. Include a suitable Publication title, ONS licence declaration and copyright statement in your page.

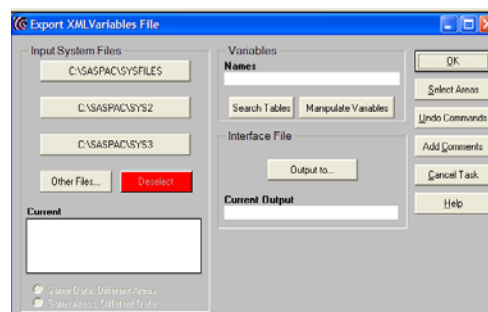
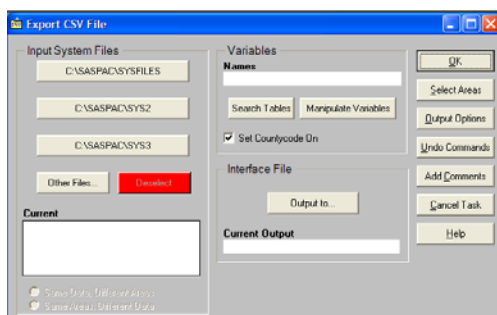
1. The first step in any GeoWise Publisher publication process is to run a SASPAC task. In the case of an **Area Profile**, the requirement is to output variables in an **XML** format. The process of achieving this is identical to the process for any other type of output. This is done through the **‘File|New Task|Export Data|XML Variables...’** menu item, as shown here.



Alternatively, the same option may be accessed via the shortcut button bar as shown below:



Use of either of these options will lead the user into a series of windows similar to those commonly experienced when outputting other types of export data. In fact, with one minor exception, the main task window is identical to that seen in an Export CSV Task, as shown in the two windows below.

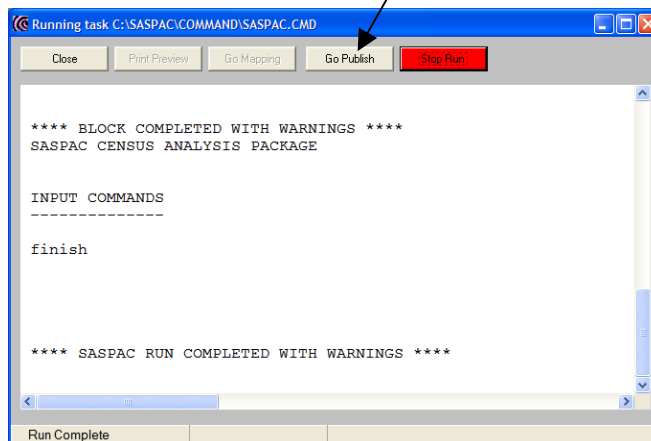


At this stage the usual data searching, area selection and manipulation tools are available to the user.

- In this case the next step is to select the data that we would like to publish. This is done through the usual **'Search Tables'** command button. Here we can identify the variables that represent the Country of Birth characteristics we are interested in. These are contained within the first column of ST015 and can be selected using the 'rubber-banding' method. This is shown in the next screen image.

	All People				Males			
	Total	0 to 15	16 to pensionable age	Pensionable age and over	Total	0 to 15	16 to 64	65 and over
ALL PEOPLE	2	3	4	5	6	7	8	
Europe	14	15	16	17	18	19	20	
United Kingdom	26	27	28	29	30	31	32	
England	38	39	40	41	42	43	44	
Scotland	50	51	52	53	54	55	56	
Northern Ireland	62	63	64	65	66	67	68	
Wales	74	75	76	77	78	79	80	
UK part not specified	86	87	88	89	90	91	92	
Republic of Ireland	98	99	100	101	102	103	104	
Ireland part not specified	110	111	112	113	114	115	116	
Channel Islands and Isle of Man	122	123	124	125	126	127	128	
Other Western Europe	134	135	136	137	138	139	140	
EU countries	146	147	148	149	150	151	152	
France	158	159	160	161	162	163	164	
Germany	170	171	172	173	174	175	176	
Italy	182	183	184	185	186	187	188	
Netherlands	194	195	196	197	198	199	200	
Spain	206	207	208	209	210	211	212	
Other EU	218	219	220	221	222	223	224	
Non EU countries in Western Europe	230	231	232	233	234	235	236	
Eastern Europe	242	243	244	245	246	247	248	
Poland	254	255	256	257	258	259	260	
Other Eastern Europe	266	267	268	269	270	271	272	

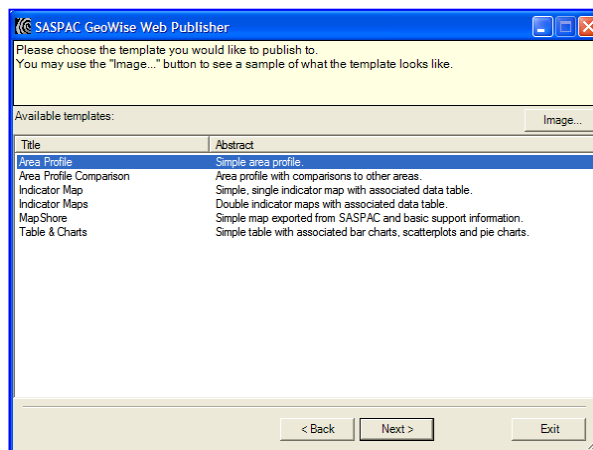
- Following the variable selection, the next step is to select the geographic areas required. In this case we are asked to publish data for all London Boroughs. This selection is carried out using the **'Select Areas|View Data'** command button. At this point, assuming no system file has been previously selected, SASPAC will prompt us to input a system file. After selecting the appropriate system file an XML output name must be specified before the task can be run.
- On completion of the task, the software will detect that an XML file has been successfully created for use. As a result the **'Go Publish'** command button is now made available.



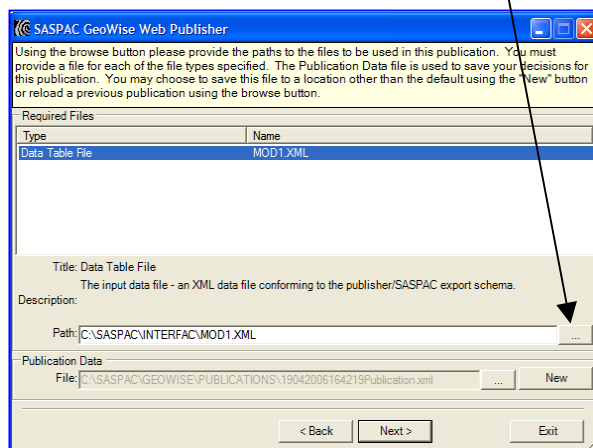
- The relationship between the ‘Go Publish’ command button and the GeoWise Web Publisher is similar to the ‘Go Mapping’ button and MapShore. Selecting this will launch the GeoWise Web Publishing tool’s welcome screen as shown below.



- After selecting the ‘Next >’ button in the initial welcome screen, a number of templates are now available. An example of the final published page can be seen by selecting the ‘Image...’ button. This task requires us to produce an ‘Area Profile’ template, which is selected by left-clicking the first template in the list.

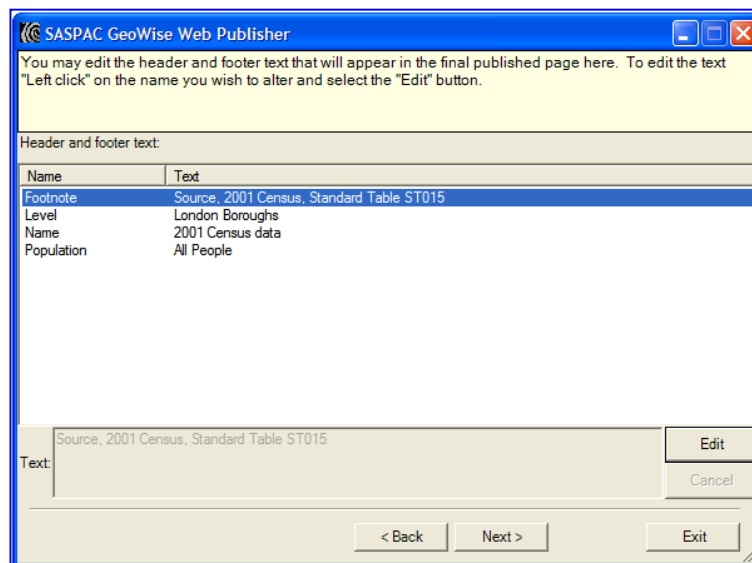


- Once the appropriate template is selected the ‘Next >’ command button is clicked to start the publication process. This leads to the window shown below, where we can identify the XML file containing the data we wish to publish. In this case, as we have launched the Publisher using the ‘Go Publish’ button, the default path to the XML file will be that created from the SASPAC task we have just run. If there is no XML file present, or an incorrect one, you can navigate to the appropriate file by using the ellipsis (...) command button alongside the ‘Path’ box.

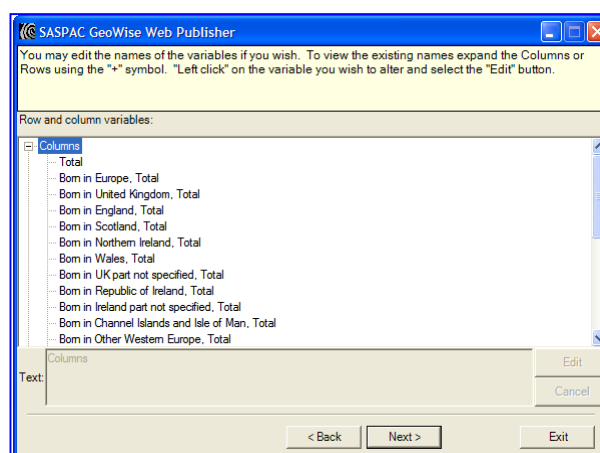


[N.B. For the purposes of this training exercise we will not be editing the **'Publication Data'** files. Further information relating to these files can be found in **UGN_GP03.**]

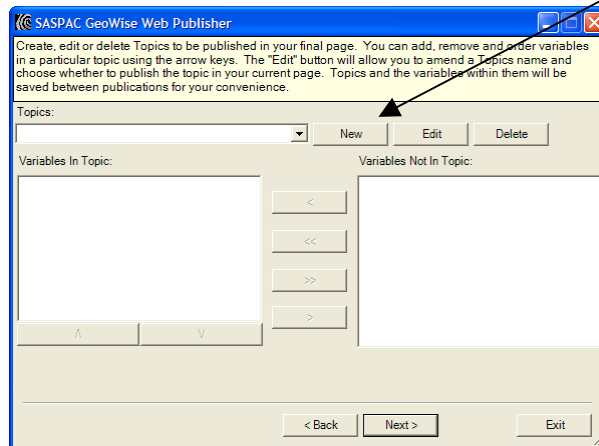
8. After selecting the correct XML file the **'Next >'** command button is used to move to the next screen. This window allows us to edit the text that will appear on the final published page. By left-clicking the **'Name'** we wish to edit and selecting the **'Edit'** command button, we can type text directly into the text box at the base of this screen. After adding the text required the **'Edit'** button changes to an **'OK'** button, which is then used to commit this edit. Once all four elements of the header and footer text have been edited (as shown in the following screen shot), we can move on to the next screen using the **'Next >'** button.



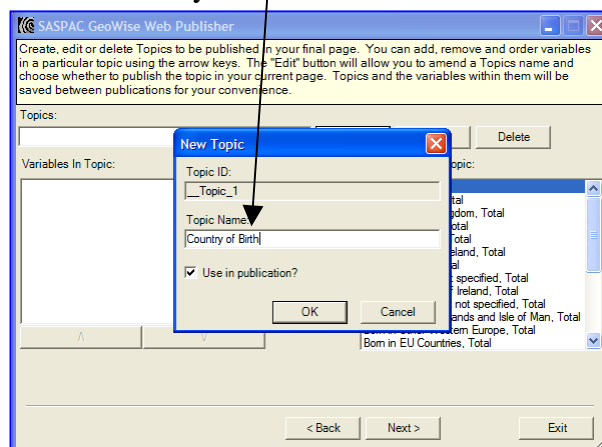
9. The next window allows us to rename the existing variable names that we have chosen to publish (remember these have been added automatically by the ST01.XVM file). If desired these are edited using the same method as the previous screen. In our example, there is no need to carry out any edits in this screen so we can continue using the **'Next >'** button. Equally, if we wanted to return to the previous screen to amend an earlier edit the **'< Back'** button can be used.



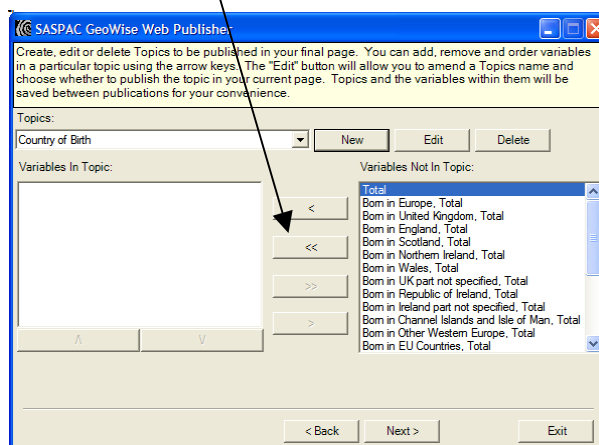
- The next step is to select and confirm the variables that we wish to publish as **'Topics'** in our final page. If no **'Topics'** have been created previously this window will appear with several blank boxes, as below. To publish variables into our template we are required to create a new **'Topic'**, this is done using the **'New'** command button.



This action will result in a **'New Topic'** sub-window appearing. Here the **'Topic ID'** cannot be edited but we can edit the **'Topic Name'** to reflect the variables we are publishing, in this case to "Country of Birth".

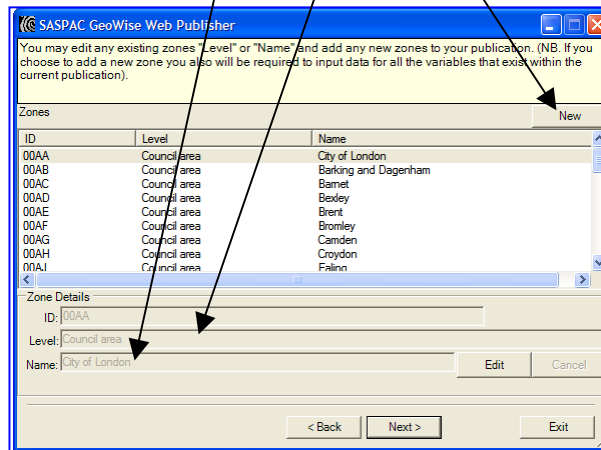


Selecting the **'OK'** button will close this sub-window and the variables contained in the XML file are now scrollable in the **'Variables Not in Topic'** box. Topics can now be created by highlighting variables and moving them across (using the **'<'** button) to the **'Variables in Topic'** box. In this case we are required to publish all variables as one single topic so the **'<<'** button can be used.

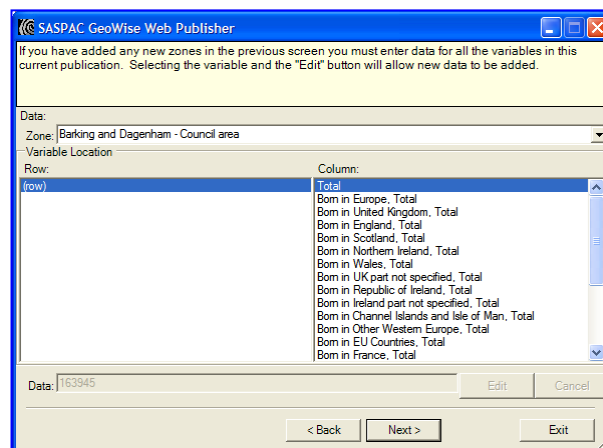


We have now finished creating our Country of Birth **'Topic'** so we can progress on to the next screen using the **'Next'** button.

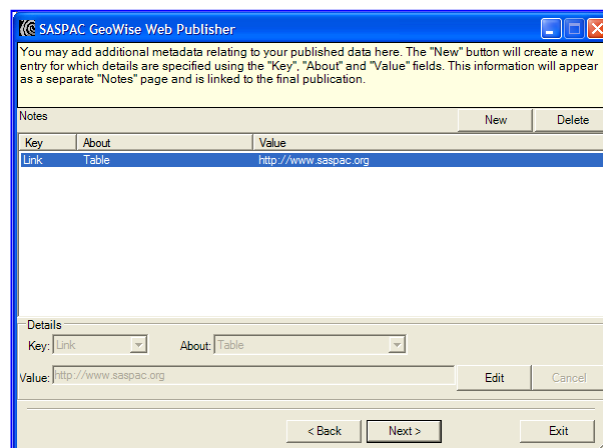
- This window allows us to edit the **'Name'** and **'Level'** of existing zones (in this case the London Boroughs) or add new zones using the **'New'** button. Neither of these tasks are required in this example so we can move to the next screen using the **'Next'** button.



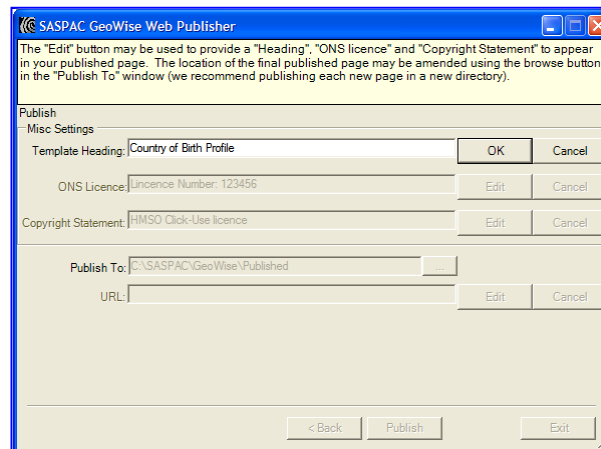
- If additional areas were added in the previous screen the window below allows us to add the necessary data for these new areas. Again, this is not required in our example so we can proceed to the next screen using the **'Next'** button. (N.B. These features of the Publisher will be used in later modules).



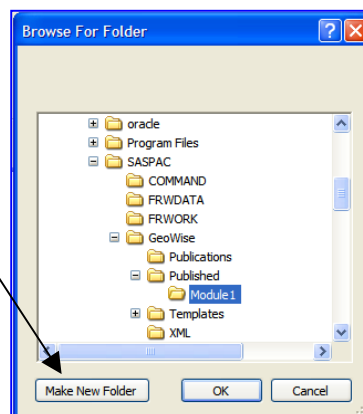
- The next window provides a facility for adding notes or any other information relating to our final published page. By default a link to the SASPAC website is provided, this will appear in the final publication as a **'Notes'** button.



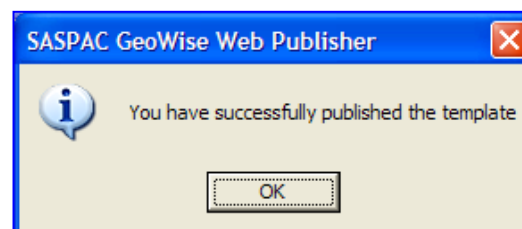
14. Clicking **'Next'** will progress to the final screen in the publication process. Here we can use the **'Edit'** button to add a suitable **'Template Heading'**, **'ONS Licence'** statement and **'Copyright Statement'**. The **'Edit'** button can be used to add any text and the **'OK'** button can then be used to commit the edit.



The final decision to be taken is the location of the final publication. The default location is **"C:\SASPAC\Geowise\Published"** but in this case we will publish our page into a new directory called **"C:\SASPAC\Geowise\Published\Module1"**. To do this we select the ellipsis (...) next to the **'Published To'** text box, and select the **'Make New Folder'** button followed by the **'Rename'** option.



The **'Publish'** button is then used to run the Publisher and after a short time a successful message should appear. Clicking **'OK'** followed by the **'Exit'** button will close the Publisher.



15. This completes the publication process and we may now navigate, using Windows Explorer, to the location of our new page (remember this is in a directory located at: **"C:\SASPAC\Geowise\Published\Module1"**). This directory contains a number of files, in this case 7, that relate to our published page. To view our page the **'default.htm'** file can be opened using an internet browser software, e.g. Internet Explorer. The final page should appear something similar to the following screen shot.

Within the viewer we can see how the edits we have made in the Publisher appear in our final page. The area profiled can be changed by selecting the drop-down arrow, as this is altered, the variables under the Country of Birth Topic are updated. The **‘Profile layout’** allows the number of columns displayed to be altered; however, in this case we only have one **Topic** of information. We will see the effect of this in Module 2.

Country of Birth	
Total	7194
Born in Europe, Total	5917
Born in United Kingdom, Total	5223
Born in England, Total	4703
Born in Scotland, Total	289
Born in Northern Ireland, Total	77
Born in Wales, Total	150
Born in UK part not specified, Total	4
Born in Republic of Ireland, Total	163
Born in Ireland part not specified, Total	0
Born in Channel Islands and Isle of Man, Total	9
Born in Other Western Europe, Total	408
Born in EU Countries, Total	379
Born in France, Total	50
Born in Germany, Total	90
Born in Italy, Total	57
Born in Netherlands, Total	25
Born in Spain, Total	33
Born in Other EU, Total	124
Born in Non EU countries in Western Europe, Total	29
Born in Eastern Europe, Total	114
Born in Poland, Total	6
Born in Other Eastern Europe, Total	108

Footnote: Source, 2001 Standard Tables ST015
 Licence Number: 123456 HMSO Click-Use licence

The **‘Notes’** button can be used to open a separate page of information which will look similar to the screen below. In this screen, hyperlinks set up during the publication process will be available and open the linked web pages.

Note	About	Value
Link	Table	http://www.saspac.org

Module 1 Exercise**Exercise 1.**

Using the GeoWise Web Publisher, create an 'Area Profile' template that represents the population profile of all wards in the London Borough of Enfield. Customise the header and footer information with relevant descriptions and display the age profile as one single topic. Include a suitable title, ONS licence declaration and copyright statement in your final page.

(Hint: Create a new 'Topic in which to publish your new data')